

12mm Outdoor LED Display

Outdoor LED Visual Media Solution



Dakco Industrial Holdings Ltd.

Tel:86-755-29960601

Fax:86-755-29106150

Email:sales@dakco.cn



Outdoor media, LED era

In addition with the new installation, more and more traditional outdoor media are and will be replaced by outdoor LED digital billboards. Customers take the good opportunity to cooperate with us and benefit from selling media space on the digital billboards to advertisers.

Of course, we're just beginning this revolution in outdoor advertising, less than 1/450 have been converted to digital.

Select the best LED display for your outdoor advertising business

High brightness

14mil LED selected, Red, Green and Blue LEDs with the same grade of luminance within $\pm 10\%$ tolerance and wavelength within $\pm 2.5\text{nm}$ tolerance.

Clear video

With the virtual pixel technology, the LED display will appear a more clear vision. Theoretically the resolution will be 4 times of a real pixel technology LED display.

Flexible shape

The special design of modules and cabinets allows a flexible shape, and the display can be curved or round shape to create a novel appearance to the public.

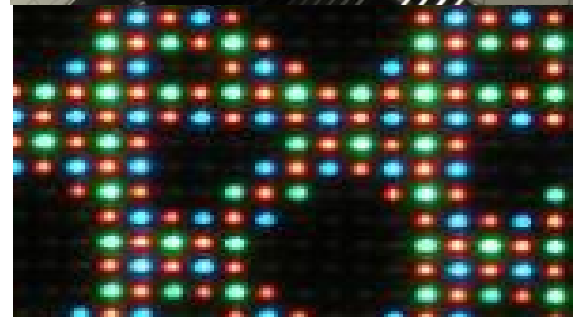
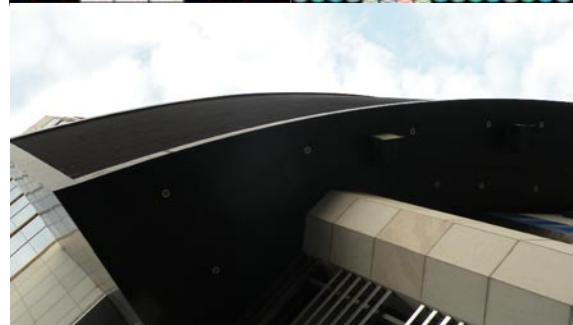
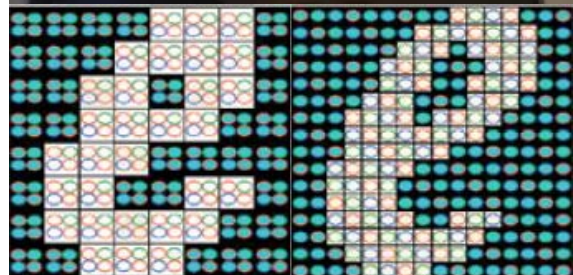
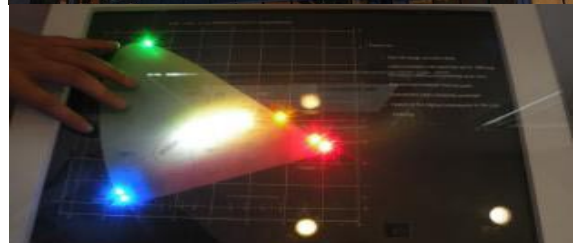
Easy connection

The connection interface of signal and power cable is specially designed to be waterproof and easy-connecting.

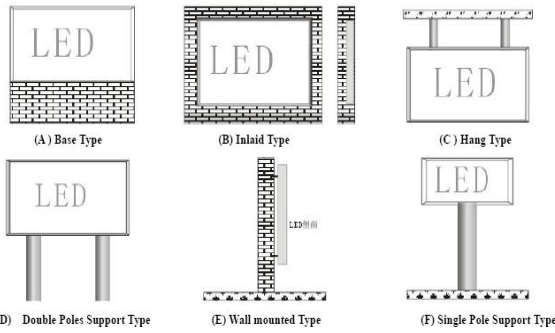
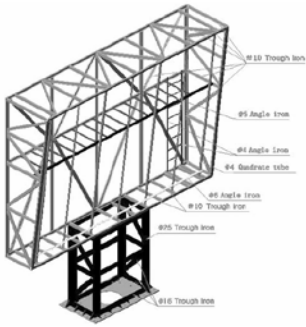


Best stability

A strict QC and test process ensure the display 24/7 working in outdoor environment.



Installation Scheme

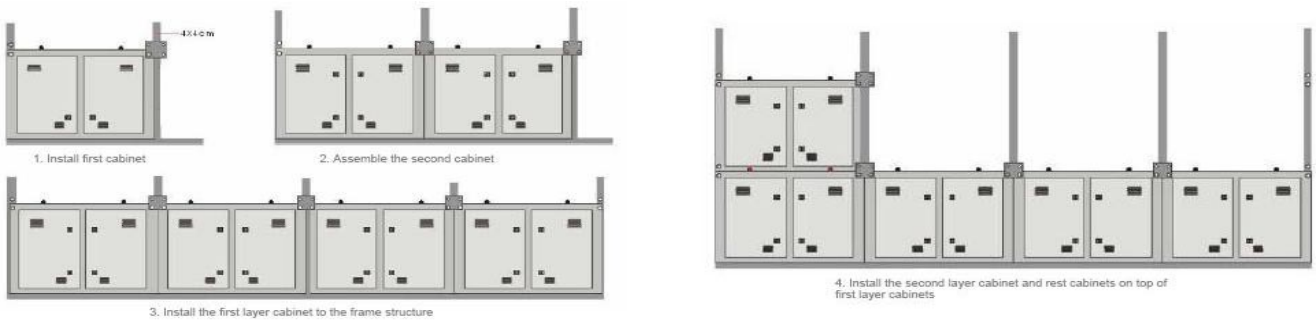


Structure

- Base Type
- Inlaid Type
- Hang Type
- Double Poles Support
- Wall Mounted Type
- Single Pole Support

Assembly

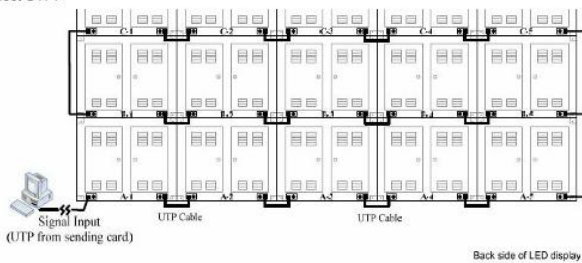
Modular in the Cabinet, Brick in the Wall



Connection

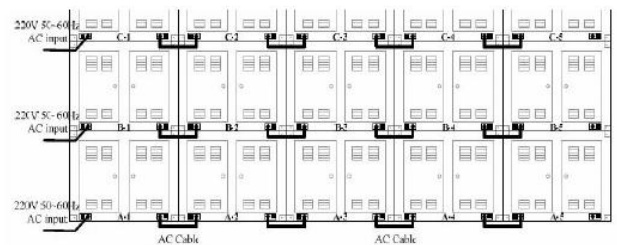
Signal

Connect UTP:

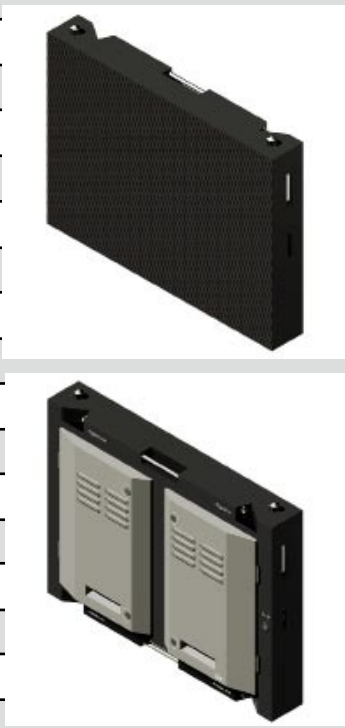


Power

Connect A/C:



Specifications

Pixel pitch: 12mm	
Module resolution: 16pixel * 16pixel	
Module size: 192mm * 192mm	
Pixel configuration: 2R1G1B	
Pixel density: virtual 27776dots/sq.m	
LED encapsulation: 346 DIP	
Driving method: 1/4 constant current	
Frame frequency: ≥60hz/s	
Refresh rate: ≥400hz/s (1000hz/s above available)	
Cabinet resolution: 192 virtual pixel * 128 virtual pixel	
Cabinet size: 1152mm * 768mm * 150mm	
Cabinet weight: 45KG (Iron)	
Best viewing distance: 8-66m	
Best viewing angle: 120°horizontally and 60° vertically	
Luminance: ≥7000cd/m ²	
Greatest power consumption: 550W/m ²	
Grey scale: Displaying Colors≥16.7M(synchronous)	
Input signal: RF, S-video, RGB, RGBHV, YUV, YC, COMPOSITION, etc	
Control system: PCTV non-linear editing card + DVI display card + main controller card +optic fiber transmission (Optional)	
Brightness adjustment: 256 levels of each color(R,G,B) manually, and 32 levels of each color automatically	
Protection grade: IP65	
Working voltage: 220V±10%, 110V±10% (can be customized)	
Working environment temperature: -40°C~60°C	
Average no failure time: >5000 hours	
Malfunction dot rate:<0.0001	
Life-span: > 100000 hours	

Recommended Options for Outdoor LED Display



P10mm



P16mm